

GAA PALETTE

The Glendale Art Association, a Non-Profit Organization Dedicated "To Create and Preserve Beauty and Promote Art Appreciation"

January 2013



Next Meeting: **Bruce Trentham, Pastel Artist Will Demonstrate His Unique, Distinctive Technique**



Bruce Trentham dramatically conveys his love of Southern California coastal and mountain areas in his pastel paintings.

Primarily a plein air pastel painter, he strives to develop a composition that invites the viewer to experience light, color and form. Early training in mediums such as watercolors, oils, acrylics, ceramics and printmaking led him to realize his passion for pastels. He has educated himself in the complexities of the medium and with inherent ability skillfully



communicates his love for color in his paintings. His paintings have been exhibited in galleries and are in collections through out Southern California. He has given pastel painting demonstrations for numerous organizations in LA and Southern California.

During the meeting, Bruce will demonstrate his richly colored and textural technique as he creates an image of Pacific Palisades.

Wednesday, January 9 • 7 pm
Sparr Heights Community Center
1613 Glencoe Way
Glendale

Bruce Trentham
Will Also Conduct
A Workshop,
February 16th

See page 2 for details.

Join Us On The 2nd Wednesday Of Each Month

(Except July & Aug)

Bring finger food and party snacks.

Party - 6:45pm • Meeting - 7:15pm

Member/Guests - \$4.00 • Mini-Show - \$3.00 per painting

Sparr Heights Community Center, 1613 Glencoe Way, Glendale

President's Message

Dear Artists,

2012 was a great year for the Glendale Art Association ending up with a bang at our festive December meeting — we had four member demonstrators and a very informal holiday meeting that was a big hit with all those who attended. We are going to do it again in a couple of months. If you are interested in presenting a short demonstration at one of our monthly meetings, let me know. BTW if you want to get into giving demonstrations, this is a good way to try out your demo chops in a friendly environment.

We are looking for a large space in Glendale for the Spring Salon in May. If you know of anything suitable for a large exhibition, please let us know. Also, we are talking



with the city of Glendale about its new initiative for displaying art in selected public buildings in 2013.

We are starting off the New Year with Bruce Trentham demonstrating his very distinctive style of pastel painting at our January 9 meeting. See you there.

— Dick Heimbold



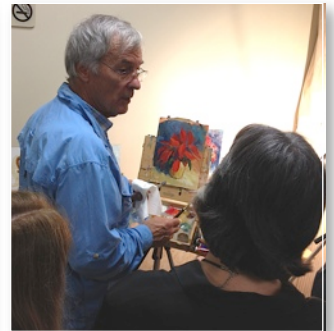
Peterfield Turpin, watercolor



Anahid Moradkhan, sculpture



Dulcie Adams, oils



Dick Heimbold, oils

Please join us...

Shakers Fundraiser

Mark your calendar for **Tuesday, February 12th** for the annual **Shakers Dine-Out Fundraiser**

for the GAA. All you have to do is tell your server that you are with the GAA and **10% of the proceeds will be donated back to our association.** Our goal is to raise money so that we may continue to fund art scholarships for area high school students. Tell your friends and family to take a break from cooking as well. All are welcome.

For more information, please contact Anna Maria Clark at 323-666-1627.



Bruce Trentham Workshop On February 16th (Location TBA)

Emeritus College instructor and award winning Burbank pastelist Bruce Trentham will also instruct a fun one day plein air landscape workshop. All mediums are welcome.

The workshop will start at 9 am with a short pastel demonstration by Bruce, in which he will share his approach to creating a landscape. Composition, line, form, value, color theory and atmospheric perspective will be discussed. Students will then be free to paint. After the lunch break, participants can complete their work from the morning session or start a new image. Bruce will observe students working through the day and make suggestions. Around 3 pm we will have a short and friendly critique of the days paintings. This workshop is sponsored by the GAA. The fee is \$50 per student.

IN THE NEWS:

Artist of the Year Award

Glendale Art Association will recognize **Antonio Pelayo** as it's 2012 Artist of the Year at the next association meeting, January 9th. We present this award every year to the member who has received the most member votes in the mini shows we hold at our monthly meetings. Antonio is a virtuoso draftsman who does incredible renderings of people — often with a poignant message that resonates strongly with those who view his art. His numerous awards attest to his ability to tell a human story.

Antonio Pelayo, born in Glendale, California in 1973 and raised most of his childhood in the Mexican countryside, has never had his own country. Moving from an American suburb to a tiny Mexican village and later back to the states has kept his world unstable; yet that very instability has made him an artist. The one home he had was his art. Though his mastery of the pencil and paper began in the shadows of an old Mexican church in an old country, he developed his skill even more in America. Frank Frazetta, Boris Vallejo, the surreal work of H.R. Giger, all mixed and blended with his Mexican childhood to make Antonio into a true American artist.

Antonio sought out the work of other Mexican artists, making them his mentors, his friends. Diego

Rivera, Frida Kahlo, Orozco, all revealed to Antonio the depth of Mexican art and its own movement from the church shadows into the modern world.

"I've tried landscapes and fantasy scenes," he says, "but it's the portrait that fascinates me. That intimacy between the subject and the artist, the vulnerability that the subject must have to my interpretation — that is trust at its most divine."

Art Review

by Michael Sheehan

Painters take note! **LOST (in L.A.)** currently at the LA Municipal Art Gallery is not your traditional gallery show! Sponsored by FLAX (France Los Angeles Exchange) and the LA Department of Cultural Affairs, this contemporary show features forty artists from France and Los Angeles. It challenges the intellect and though emotionally unsettling (it's based on the ABC television show "Lost" that aired from 2004 through 2010) I find the individual pieces ranging from the sacred (Jim Shaw's interesting stringed instrument in the shape of a cross and Christian

ephemera) to the profane (Mike Kelley's typically gritty video). Each piece is unique and challenging in a very interesting way.

The show is organized through the auspices of Olga Garay, director of the Los Angeles Department of Cultural Affairs and FLAX in collaboration with curator Marc-Olivier Wahler, former director of the Palis de Tokyo in Paris. Wahler discusses the evolution of the installations referencing the disorientation that was part and parcel of the ABC television series, saying that artists decided that one goal would be for the show to deliberately leave visitors with a slight feeling of discomfort, making them decide how each piece might fit into the theme.

LOST (in L.A.) continues at the LAMunicipal Art Gallery through January 27, 2013. Gallery hours are from noon until five, Thursday through Sunday. Barnsdall Park is located just west of Vermont on Hollywood Boulevard. Located next to Frank Lloyd Wright's Hollyhock House (currently closed for renovations), parking and admission to the Gallery are free to the public. I'm there on Thursdays and hope to see more GAA members stopping by.



GAA PAINT OUTS	JANUARY	FEBRUARY	MARCH
	Thursday, Jan. 10th Glendale Train Station (shown at left)	Thursday, Feb. 14th Glendale City Hall	<i>To be announced</i>
	Sunday, Jan. 27th Arroyo Seco	Sunday, Feb. 24th L.A. River	
For more information, contact: Shree Hingnikar: shree415@yahoo.com			

MEMBERUPDATES

The GAA will hold their **next show at the La Canada Flintridge Library** in April. Deadline for submissions is March 30th. More information to come. **George Scribner** and **Dick Heimbold** are in the Segil Fine Arts Small Works show that is on going through January. The gallery is located at 110 West Lime Avenue, Old Town Monrovia. For more information, visit <http://segilfineart.com/>

Michael Sheehan is serving as docent on Thursdays at the Barnsdale Municipal Gallery exhibition **Lost in LA**. (See page 3 for a review of the show written by Michael, which include gallery information.)

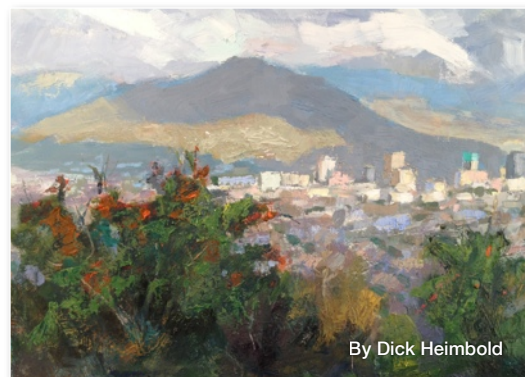
Peterfield Turpin has 35 paintings on display at Penelope's Cafe, Books & Gallery. Peterfield paints in both watercolor and oils, but, has chosen to hang only watercolors in the exhibit. Penelope's is located at 1039 Foothill Blvd., La Canada Flintridge and serves a delicious breakfast and lunch. The works will be on display through February.

Paint-out Peek

Participants reported an ideal day with beautiful views of Glendale and the surrounding area for the Forest Lawn Memorial Park paint-out, December 23rd.



Dianne Carter



By Dick Heimbold



By Shree Hingnikar



Dick Heimbold



Jeannie Pool


Submit Your News & Photos

We love getting news about our members. Please send your news and photos to be included in the Member News section of this publication to Vicky Rees at: vrees@studiomelange.net

Whites Art, Framing & Restoration Gallery
 2414 Honolulu Avenue, Montrose, CA 91020 | Tel: 818.957.4071 | Fax: 818.957.8100 | whitesfineart.com

The threat of rain forced the December 13th Deukmejian Wilderness Park GAA paint-out group indoors to the BMAI Art Institute, located at 2228 Florencita Dr., Montrose.. Shown are Trish Kertes, Peter Turpin, Araks Johannes, and Shree Hingnikar painting beautiful model, Hope Algeo. We'll be painting again with Hope en plein aire when the weather clears up.






SILVANA GALLERY
OF FINE ART & CRAFTS
Painting • Sculpture • Jewelry • Craft

www.silvanagallery.com

1731 W. Glenoaks Blvd. • Suite 200 • Glendale, California 91201

Tell: 818-662-7070
Direct: 818-395-0313
Fax: 818-662-7075



December Mini Show Winners



Left to right: Antonio Pelayo, Miriam Thorin, Araks Johannes, Vicky Rees

1st Place
Araks Johannes

2nd Place
Vicky Rees

3rd Place
Miriam Thorin

Best of Show
Antonio Pelayo

Bring a new painting to our next monthly meeting. Members vote. Ribbons are awarded.

THANK YOU

Glendale Art Association would like to say *thank you* to our generous sponsors.



Glendale Art Association 2013 Officers

President

Dick Heimbald
818-242-2069
dheimbold@aol.com

1st Vice President

Dulcie Adams
323-661-8338

2nd Vice President

Marina K. Rehrmann
818-802-0420
glendaleart@gmail.com

Secretary & Scholarships

Diane Carter
818-637-7896
dianem.carter@yahoo.com

Treasurer/Accounting Dir.

Araks Johannes
818-399-8481
ajohannes9@yahoo.com

Ways & Means

Anna Maria Clark
323-666-1627

Parliamentarian

Shree Hingnikar
shree415@yahoo.com

2013 Chairmembers

Artist of the Year

Monthly Mini Show
Paul Chamberlain

Exhibition

Dick Heimbald, acting
818-242-2069
dheimbold@aol.com

Trish Kertes

tkertes@earthlink.net

Hospitality

Charlene Mieke Nomura
charlene.nomura@
sbcglobal.net

Membership

Jennifer Bentson-Gebel
818-243-5405
jbentson@charter.net

Newsletter

Victoria Rees
vrees@studiomelange.net

Publicity

Becky Mate
beckymate@earthlink.net

Paint Out / Plein Air

Shree Hingnikar
shree415@yahoo.com

Webmaster

Marina K. Rehrmann
818-802-0420
glendaleart@gmail.com

Monthly Demonstrator/ Workshop

Dulcie Adams
323-661-8338

Sponsors

Dr. George Chernich
818-244-3960
gchernich@sbcglobal.net

WE LOVE
MEMBER NEWS

Feb. Newsletter Deadline: Jan. 15

Please email announcements, articles and
photos by January 15 to Vicky Rees at

vrees@studiomelange.net

Visit GAA on the web
<http://www.glendaleartassociation.com/>



GAAPALLETTE

*The Glendale Art Association, a Non-Profit Organization Dedicated
"To Create and Preserve Beauty and Promote Art Appreciation"*

P.O. Box 413
Glendale, CA 91209